

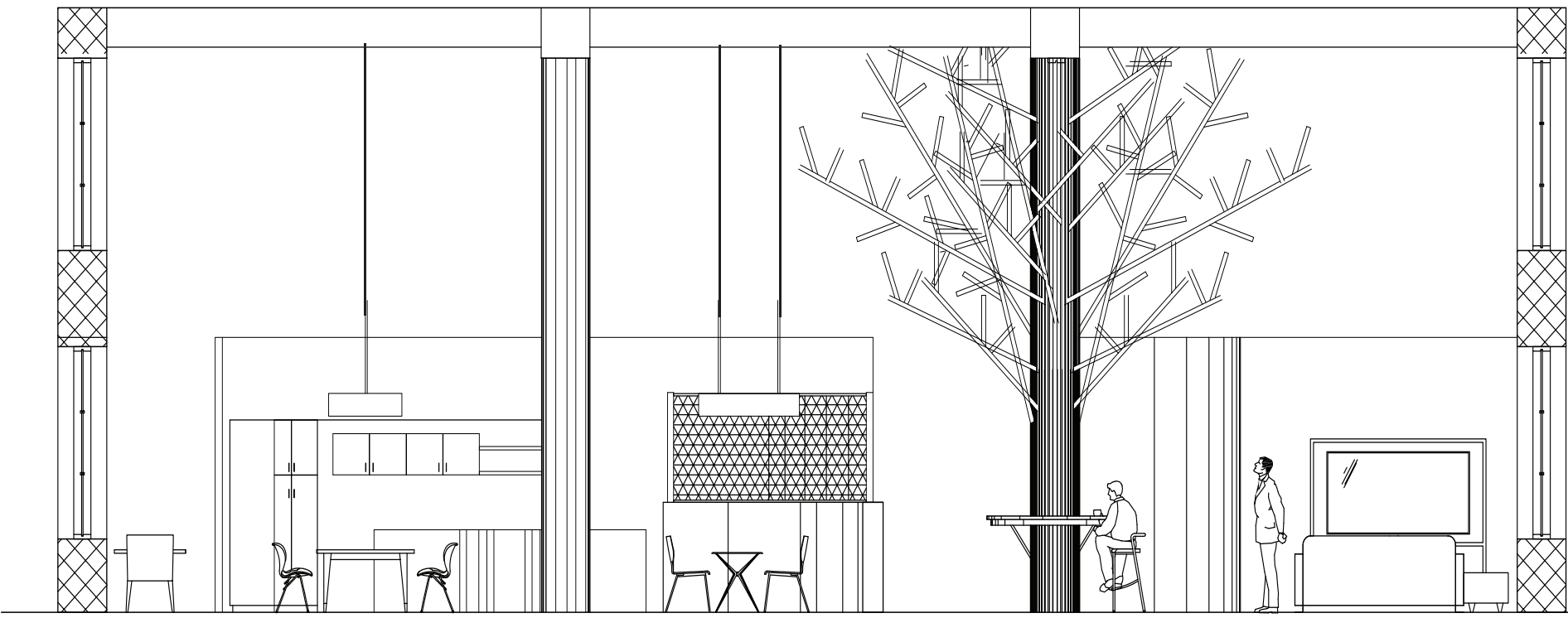


Design Statement.

Gather is a veteran living community in downtown Fresno, California. A sense of isolation following a return to civilian life may stem from a loss of comradery and can cause an inability of friends and family to relate to veterans’ military experiences. Our proposed design emphasizes on building a sense of strong community and offers opportunities for residents to get involved and transition smoothly into a civilian life. By strategically placing Gather in the heart of booming residential growth and cultural/art district our goal is to foster a sense of community engagement, belonging and building a social infrastructure not only inside but also outside the walls of the center. Post-COVID-19 goal is for Gather to serve as an Art Hop venue. All public spaces are designed to encourage interaction and collaboration between residents through shared activities such as a book club, physical exercise, card games, ping pong tournaments, music performances, tv room, and shared meals. Circular shapes are interwoven throughout the design to symbolize unity, connection and building of strong community ties.



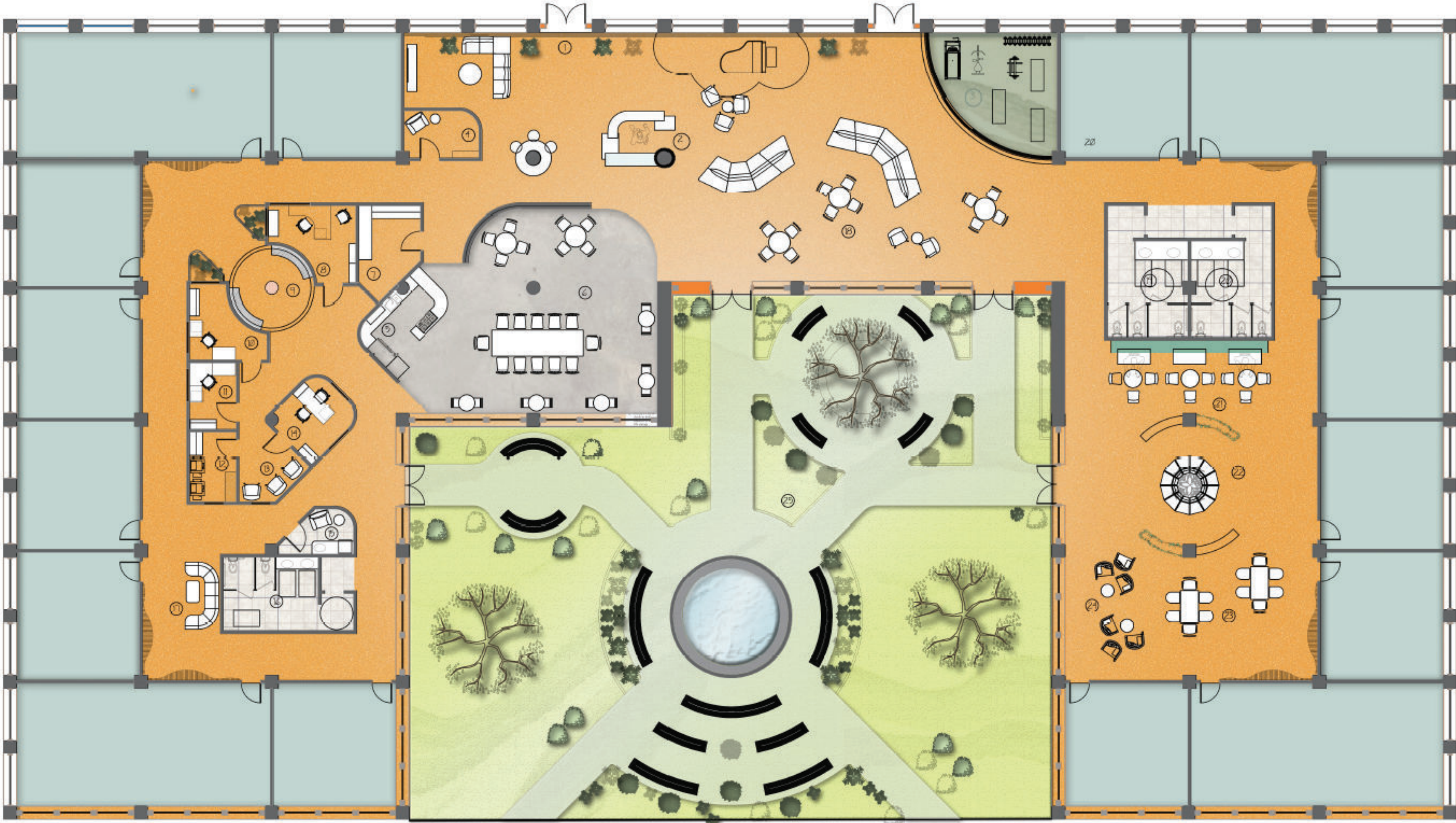
Central Common Area.



Kitchenet/ Dining Area Elevation.

Plan.

1. Entry
2. Reception/Mail and Package delivery
3. Gym
4. Meditation Room
5. Kitchen area
6. Community Dining area
7. Janitor's Closet
8. Manager of Veteran Support Svcs
9. Common Corridor seating/ Skylight
10. Building Manager Office
11. Administrative Assistant
12. Copy & Filing Area
13. Waiting area counseling
14. Head of Counseling Svcs
15. Lactation room
16. Family Restroom
17. Seating Area- Flex
18. Central common area
19. Gender neutral restroom
20. Gender neutral restroom
21. Multipurpose space
22. Reading area
23. Multipurpose space
24. Seating - Flex area



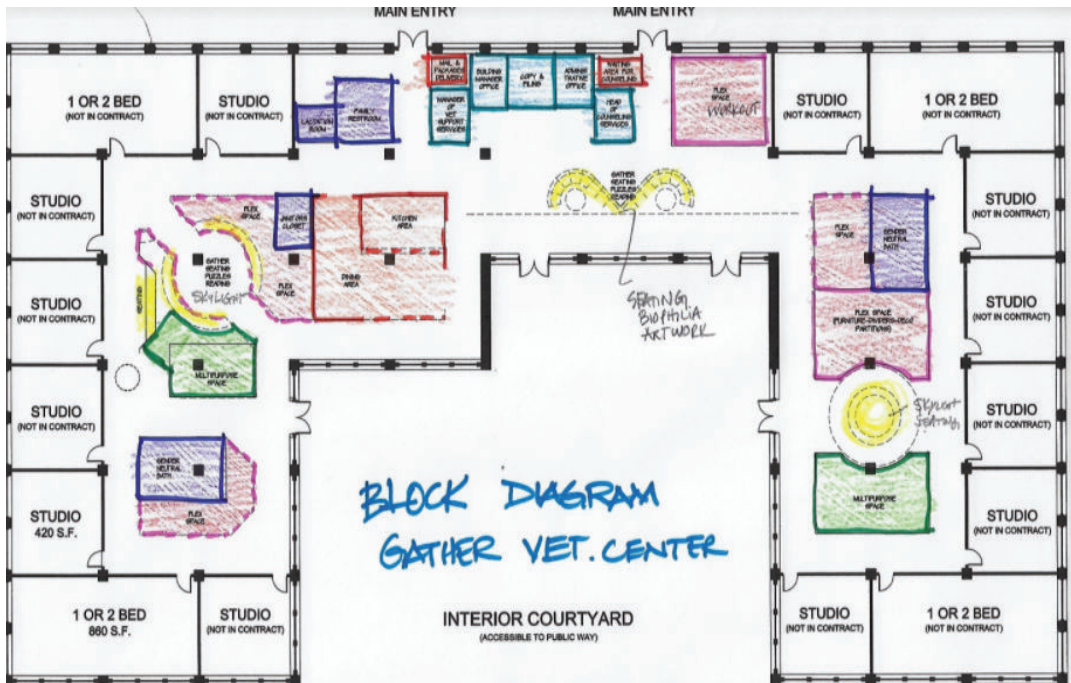
Multipurpose Area.



Schematics.

Gather Veteran Home (VH) Adjacency Matrix											
Room	Public Spaces	Private Spaces	Common Spaces	Private Spaces	Common Spaces	Private Spaces	Common Spaces	Private Spaces	Common Spaces	Private Spaces	Common Spaces
Entry	1	1	1	1	1	1	1	1	1	1	1
Reception/Mail and Package delivery	1	1	1	1	1	1	1	1	1	1	1
Gym	1	1	1	1	1	1	1	1	1	1	1
Meditation Room	1	1	1	1	1	1	1	1	1	1	1
Kitchen area	1	1	1	1	1	1	1	1	1	1	1
Community Dining area	1	1	1	1	1	1	1	1	1	1	1
Janitor's Closet	1	1	1	1	1	1	1	1	1	1	1
Manager of Veteran Support Svcs	1	1	1	1	1	1	1	1	1	1	1
Common Corridor seating/ Skylight	1	1	1	1	1	1	1	1	1	1	1
Building Manager Office	1	1	1	1	1	1	1	1	1	1	1
Administrative Assistant	1	1	1	1	1	1	1	1	1	1	1
Copy & Filing Area	1	1	1	1	1	1	1	1	1	1	1
Waiting area counseling	1	1	1	1	1	1	1	1	1	1	1
Head of Counseling Svcs	1	1	1	1	1	1	1	1	1	1	1
Lactation room	1	1	1	1	1	1	1	1	1	1	1
Family Restroom	1	1	1	1	1	1	1	1	1	1	1
Seating Area- Flex	1	1	1	1	1	1	1	1	1	1	1
Central common area	1	1	1	1	1	1	1	1	1	1	1
Gender neutral restroom	1	1	1	1	1	1	1	1	1	1	1
Gender neutral restroom	1	1	1	1	1	1	1	1	1	1	1
Multipurpose space	1	1	1	1	1	1	1	1	1	1	1
Reading area	1	1	1	1	1	1	1	1	1	1	1
Multipurpose space	1	1	1	1	1	1	1	1	1	1	1
Seating - Flex area	1	1	1	1	1	1	1	1	1	1	1

Adjacency Matrix.



Block Diagram.



Seating Below Skylight.



Multipurpose Space.



Materials.

To promote the best healthcare outcomes and help prevent the spread of infections we utilized manufactures that design products with infectious control:

- **BioCote** antimicrobial paint additive will be applied to interior wall paint
- **Herman Miller** furniture collection offers performance textiles that exceed the Association for Contract Textiles (ACT) standards for heavy duty use. Each has their own performance attributes that offer various benefits for healthcare environments, cafeterias, collaborative spaces, and other high traffic areas
- **Nova Cork** flooring is a natural thermal and acoustical insulator. Both mildew and mold resistant, cork is a natural repellant for keeping germs away. In addition it cushions your steps by lightly compressing at the cellular level to support your footsteps in a comfortable manner. It absorbs the shock of each step by cradling your foot
- **Urban Coverings** living wall moss tile is light-weight and easy to install; it is sound-absorbing, flame retardant and air-purifying

3D Wood Parametric Wall
Parametric Arch

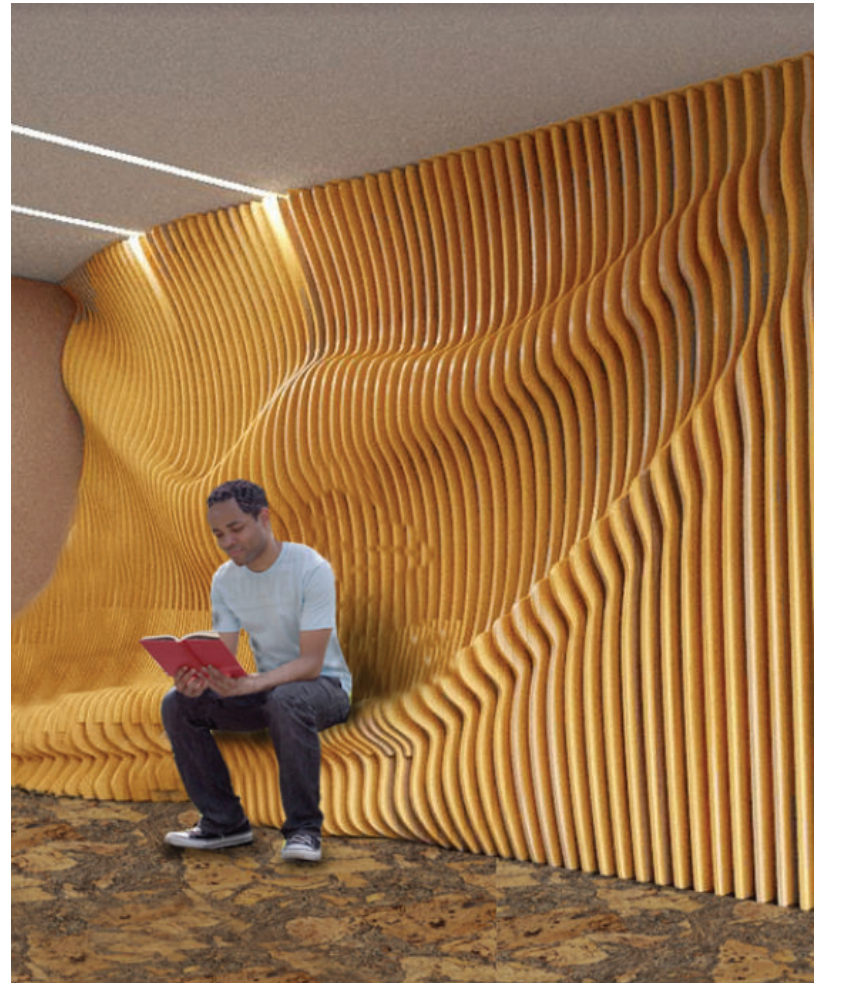
Accent Wall Paint
Dunn Edwards DE5181 Georgia Clay

Facade.

Parametric 3D wood wall resembles a wave-like motion and is continuous with the curvilinear elements present in our design. Each residential door is painted in a different color to emphasize the concept of individuality. Linear live green moss inserts alongside the wall give the facade a residential feeling and underline the biophilia concept.



Rooms Facade.



Parametric Wall.



Social Sustainability.

According to The Young Foundation there are 6 principles for social and cultural life:

- a sense of community identity and belonging
- tolerance, respect and engagement with people from different cultures, background and beliefs
- friendly, co-operative and helpful behaviour in neighbourhoods
- opportunities for cultural leisure, community, sport and other activities
- low levels of crime and anti-social behaviour
- opportunities for all people to be socially included and have similar life opportunities

COVID-19.

According to research post-COVID-19 design should consider sustainability as its main focus, and adaptive reuse architecture is the most effective form of sustainability. Natural light, natural ventilation and green spaces should be at the forefront of designers' decision-making. In addition, designers should take on a health-oriented approach which consists of modular design, prefabricated elements, flexible partitions, and lightweight structures. New configurations with social distancing measures should be applied; and materials and surfaces that eliminate spread of infections, as well as automation and voice activation entry points.



Modular Seating.

Modular seating by Herman Miller offers flexibility for different uses of space (group activities or solitude), as well as an opportunity for either proximity or distance between residents. Thus, it is a perfect solution for COVID-19 design.

Color.

Research shows that veterans prefer walls to be painted in brighter, more vivid colors instead of muted as they are more cheerful and do not feel institutional. Because color-blindness affects veterans in high numbers, colors like blue are more recognizable to the vision-impaired. Sandy or olive-drab hues usually should be avoided to prevent associations with battleground areas. Our design offers blue tones mixed with warm yellows and deep oranges that balance each other harmoniously offering a calm state of mind and uplifting mood simultaneously.

Veterans.

Veterans struggle with such phenomena as identity: the impact of their training and military experience is still evident in their actions, behaviors, and thoughts, as well as their ability to relate to civilian friends, family and employers. Almost every veteran described feeling more comfortable around those who had also previously served in the military. Having that peer support is essential for transitioning, and thus we want to offer a safe place for veterans to establish bonds with each other and build support networks through Gather veteran community center. In addition, veterans experience a feeling of frustration and a lack of motivation to "start over" while transitioning to a civilian life. Many struggle with PTSD (post-traumatic stress disorder) and other mental health and substance abuse issues; and a lack of preparation for this transition could be a great contributing factor. Gather is a healthy place to receive needed counseling and support from like-minded residents. Another evidence of research states that bonding among veterans is also established through physical exercise and exertion. Gather offers a gym area, tables for ping pong matches, and interior and courtyard walkway paths.